



NOR CAL VETERINARY SURGICAL

PHONE: 415.683.7930 FAX: 415.223.3469 WEB: WWW.NORCALVETSURG.COM

TPLO SETUP AND TIMELINE NCVS

- **AT TIME OF PATIENT DROP OFF: CONFIRM SURGICAL LIMB WITH DVM AND OWNER; PERFORM ANY NECESSARY BLOODWORK**
- **1 HR. PRE-OP:**
 - **PREMED (ALL OPIOIDS EXCEPT BUTORPHANOL ARE ACCEPTABLE), PLACE IVC**
- **40 MIN PRE-OP:**
 - **SURGEON CALL-CONFIRM TABLE TIME**
 - *******ALWAYS WAIT TO ANESTHETIZE PATIENT UNTIL SURGEON HAS CALLED AND CONFIRMED ARRIVAL/SURGERY TIME*******
 - **ANESTHETIZE PATIENT**
 - **PLACE APPROPRIATE MONITORING EQUIPMENT (SHAVE PEDAL SURFACE OF NON-SURGICAL PES (FIG. 1) FOR DOPPLER PLACEMENT**
 - **START IVF AT SURGICAL RATE (10ML/KG/HR)**
 - **OBTAIN PRE-OP RADIOGRAPHS (SEE NCVS STIFLE RADIOGRAPH SHEET)**
- **25 MIN. PRE-OP**
 - **SHAVE LIMB FROM METATARSAL PAD TO MID-THIGH (FIG. 2) PAYING SPECIAL ATTENTION TO THE HOCK AND THE MEDIAL STIFLE. OPTIMALLY, USE A #30 BLADE FOR ROUGH CLIP FOLLOWED BY A FINAL CLIP WITH #50 BLADE.**
 - **TAPE FOOT (LATEX GLOVE COVERED WITH 1" POROUS WHITE TAPE)**
 - **PERFORM INITIAL ROUGH-PREP OF LIMB WITH ALTERNATING 4% CHLORHEXIDINE SCRUB AND 70% ISOPROPYL ALCOHOL (SCRUB UNTIL SPONGES NO LONGER HAVE ANY DISCOLORATION/DIRT)**
 - **WRAP CLEAN LIMB IN A CLEAN, DRY TOWEL OR "CHUCKS" PAD**
- **25 MIN. PRE-OP**
 - **POSITION PATIENT IN STERNAL RECUMBENCY WITH HIND LEGS PULLED CRANIALY (FIG. 3)**
 - **SHAVE EPIDURAL SITE (FIG. 3)- CENTERED BETWEEN ILIAL WINGS, ~8X10CM AREA**
 - **PREP EPIDURAL SITE (MIN 3 TIMES CHLORHEXIDINE/ALCOHOL)**
- **15 MIN. PRE-OP**
 - **SURGEON ARRIVES; PERFORMS EPIDURAL, SETS UP EQUIPMENT**
- **10 MIN. PRE-OP**
 - **PLACE PATIENT IN OR IN DORSAL RECUMBENCY**
 - **HANG LIMB FROM IV POLE OR OR LIGHTS USING 1" POROUS TAPE (FIG. 4)**
 - **PLACE APPROPRIATE MONITORING EQUIPMENT ON PATIENT**
 - **ADMINISTER CEFAZOLIN OR AMPICILLIN 22MG/KG IV SLOWLY**
- **5 MIN. PRE-OP**
 - **PUT ON CLEAN OR STERILE LATEX GLOVES. PERFORM FINAL PREP OF LIMB WITH NEW, DEDICATED OR SCRUB; ALTERNATE 4% CHLORHEXIDINE SCRUB AND 70% ISOPROPYL ALCOHOL (MINIMUM OF 3 EACH, OBSERVING STANDARD ASEPTIC TECHNIQUE)**
- **POST-OP**
 - **OBTAIN STIFLE RADIOGRAPHS**
 - **PLACE FENTANYL PATCH; ADMINISTER NSAID IF APPLICABLE**
 - **ICE-PACK OPERATED STIFLE FOR 5 MIN Q 4HRS.**
 - **CONTINUE IVF AT 1.5-2.0 TIMES MAINTENANCE RATE**
 - **CONTINUE OPIOIDS Q 4-6 HRS.**
 - **E-COLLAR AT ALL TIMES; SLING WALK PATIENT Q 4-6 HRS**

- **CONTINUE ANTIBIOTICS Q 8 HRS.**

FIGURE 1



FIGURE 2



FIGURE 3

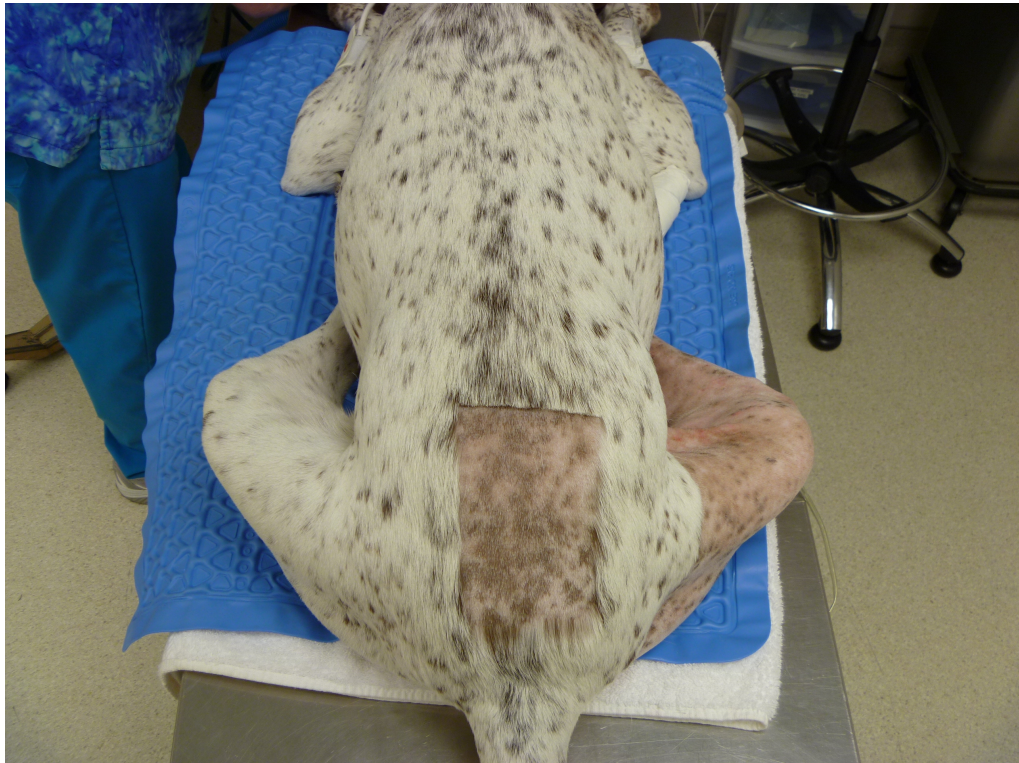


FIGURE 4